

shepherds
A better home
moving experience



12 Cublands

Hertford, SG13 7TS

Guide Price £289,000



12 Cublands

Hertford, SG13 7TS

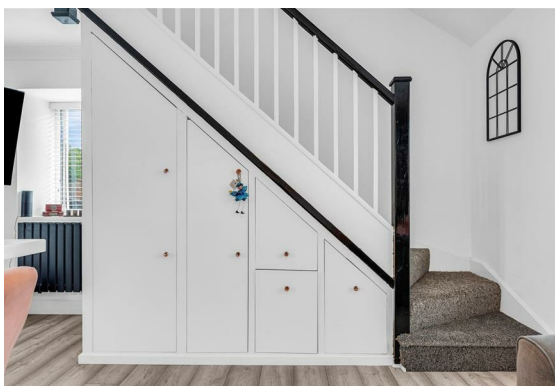
Offered with no onward chain, this stylish one-bedroom end of terrace property is located in the ever-popular Foxholes Estate and is ready to move straight into. Finished to a high standard throughout, it's an ideal choice for first-time buyers, downsizers, or investors.

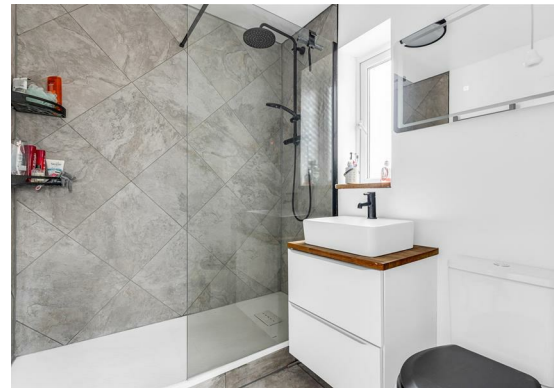
The open-plan living, kitchen and dining area creates a bright and sociable space, with direct access to a private patio. The double bedroom is well-proportioned and served by a modern, fully fitted bathroom.

Further benefits include an allocated parking space, smart interior finishes, and a low-maintenance layout – all set within a quiet yet convenient location close to shops, schools and transport links.

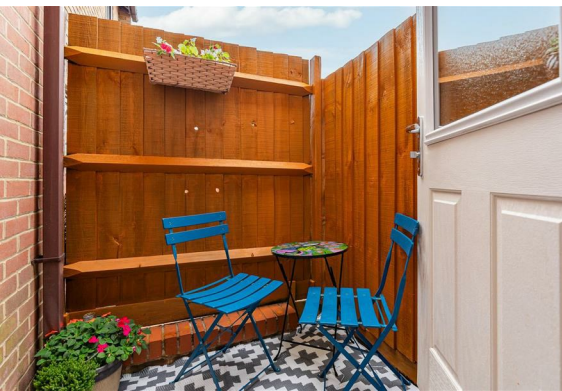
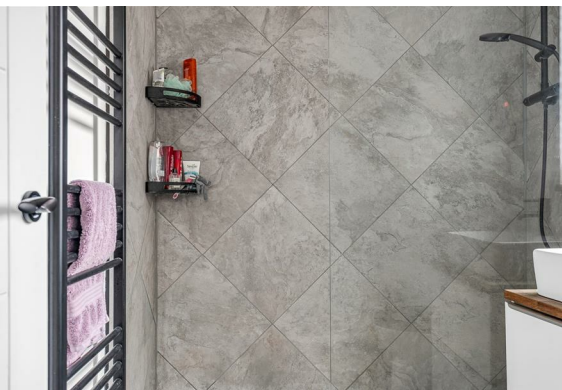
A rare opportunity to secure a high-quality, chain-free home in one of Hertford's most sought-after developments.

https://sprift.com/dashboard/custom-ipr-report/?access_report_id=4525285

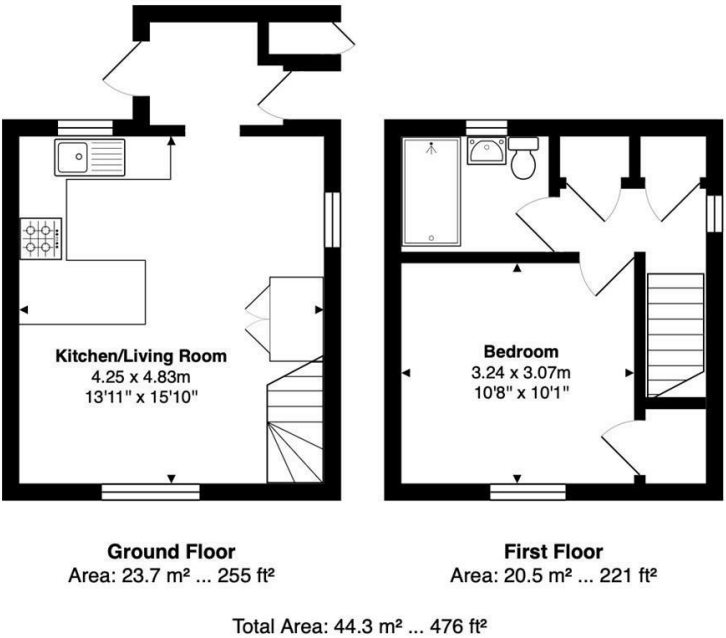




- No onward chain
- Stylish one-bedroom end of terrace in the sought-after Foxholes Estate
- Bright open-plan living, kitchen & dining area with direct patio access
- Private outdoor space
- Well-proportioned double bedroom
- Allocated parking space
- Quiet, convenient location close to shops, schools & transport links



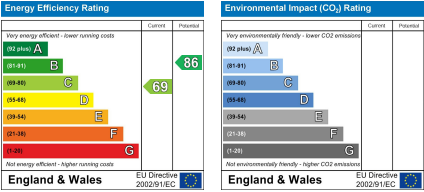
Floor Plan



Viewing

Please contact Shepherds of Hertford on 01992 551955 if you wish to arrange a viewing appointment for this property or require further information.

Energy Performance Graph



These particulars, whilst believed to be accurate are set out as a general outline only for guidance and do not constitute any part of an offer or contract. Intending purchasers should not rely on them as statements of representation of fact, but must satisfy themselves by inspection or otherwise as to their accuracy. No person in this firm's employment has the authority to make or give any representation or warranty in respect of the property.

Riverside House, 6 Millbridge, Hertford, SG14 1PY
Tel: 01992 551955 Email: enquiries@shepherdsofhertford.co.uk